

# NAPLES ISLAND COMMUNITY-BASED EMERGENCY PREPAREDNESS AND EMERGENCY RESPONSE PLAN

*An Initiative of the Naples Improvement Association  
in Partnership with Long Beach CERT*

*Pull out and keep  
this special insert  
for reference and to  
draft your own  
Emergency  
Preparedness Plan*



*— Neighbors Fending For Neighbors —*



Search + Rescue



Medical Care



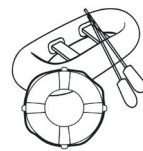
Evacuation



Emotional Care



Fire Suppression



Water Rescue



Communications



Pet Care



Island Visitors



Child Care



Senior Care



# CERT: Community Emergency Response Team

*Following a major earthquake... Who will check on you? Check on your pets? Check your home for busted pipes and gas leaks? Put out the fire that just started next door at your vacationing neighbor's house?*

In Long Beach, we have but one firefighter per 5,000 residents. If a massive earthquake hits the city, the resulting structural and medical crises will overwhelm emergency response systems. The City is warning residents to be prepared for no services for 3 - 7 days. This means no professional firefighters, no paramedics, no electricity, and no water. As a community, we would be fending for ourselves.

In collaboration with the City and the Long Beach Fire Department (LBFD), Naples now has a community-based emergency response plan that will mobilize residents, employees and visitors to serve as emergency responders until professional responders make it to the island.

LB CERT-Naples is a committee of the NIA championing Emergency Preparedness

and Emergency Response on the island. LB CERT-Naples is shorthand for: *Long Beach Community Emergency Response Team-Naples Island*. The team's mission is: *"Do the greatest good for the greatest number of people in the shortest amount of time."*

Across the country, CERT's are formed by volunteers of a neighborhood or workplace who want to be better prepared for the hazards that threaten their communities. In the event of a large-scale incident, these volunteers will mobilize fellow residents, employees and visitors to serve as first responders until professional responders arrive on the scene.

Naples' Plan is based upon two distinct perspectives—BEFORE and AFTER.

**BEFORE** a major disaster the focus is on...

- **Awareness** - the community knows a plan exists and helps develop the details,
- **Commitment** - the community commits to support the plan, and
- **Preparedness** - community members stock up, connect, plan and practice.

**AFTER** a major disaster, the focus is on ...

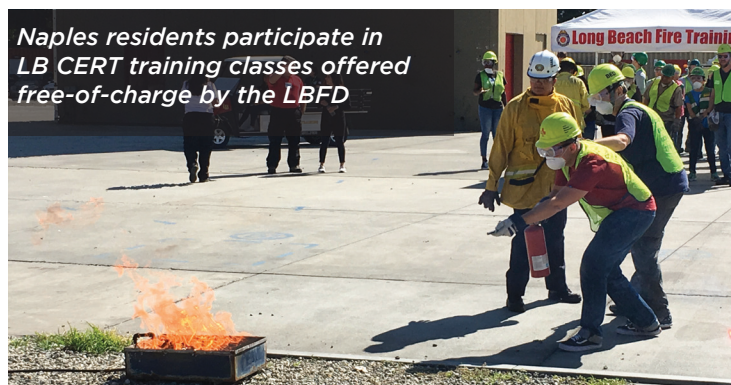
- **Action** - the community deploys The Plan and fends for itself until professional responders arrive on the scene.

**Naples Emergency Response Plan Includes...**

- Block-by-block and island-wide communication in concert with the City and professional emergency response partners
- Light search + rescue
- Fire suppression
- Medical care
- Child, senior + special needs care
- Emotional care
- Pet care
- Water rescue + ferrying on/off the island
- Assisting visitors trapped on the island
- Coordinated evacuation

**For more information about Long Beach CERT's training program...**

- [LongBeachCERT.site-ym.com](http://LongBeachCERT.site-ym.com)
- 562.570.2525
- [CERT@longbeach.gov](mailto:CERT@longbeach.gov)



*Naples residents participate in LB CERT training classes offered free-of-charge by the LBFD*





# SHOW YOUR SUPPORT

After reviewing The Plan, come back to this page to register in the NIA's emergency preparedness database. The database will be used by your Block Captain(s) to coordinate your area and by the NIA to better understand and coordinate Naples' emergency response resources. Knowing that each islander is aware of, and supportive of The Plan is the first priority.



Return this form (one copy per person) to:

LB CERT—Naples Team • P.O. Box 3687 • Long Beach, CA 90803  
or register online at [NaplesIsland.org/CERT](http://NaplesIsland.org/CERT)

Please indicate your level(s) of interest in supporting Naples' Emergency Response Plan:

- Informed Resident or Business**  
I'd like to learn The Plan and prepare my household. Please keep me informed.
- Community Responder**  
If present and capable, I would assist my Block Captain following an emergency.
- Block Captain: *Be the communication link to approximately 30-40 households***  
I'd like to learn more about this role (there will be 2-3 Co-Captains per Block).
- Committee Member: *Help develop/ implement the island-wide response plan***  
I'd like to learn about the committee and its current volunteer needs/priorities.

Name: \_\_\_\_\_

Address: \_\_\_\_\_ Phone: \_\_\_\_\_

Email: \_\_\_\_\_

Division\* \_\_\_\_\_ Block\* \_\_\_\_\_ \* - see map on page 8

I have specific training/experience/interest in the following area(s):

- Crisis Counseling
- Child Care
- Fire Fighting
- Emergency Response
- Search and Rescue
- Other: \_\_\_\_\_
- Pet Care
- Senior Care
- Plumbing
- First Aid
- HAM Radio Operator
- CERT Graduate
- Electrical Work
- Medical
- Carpentry/Construction
- Coordinating/Organizing



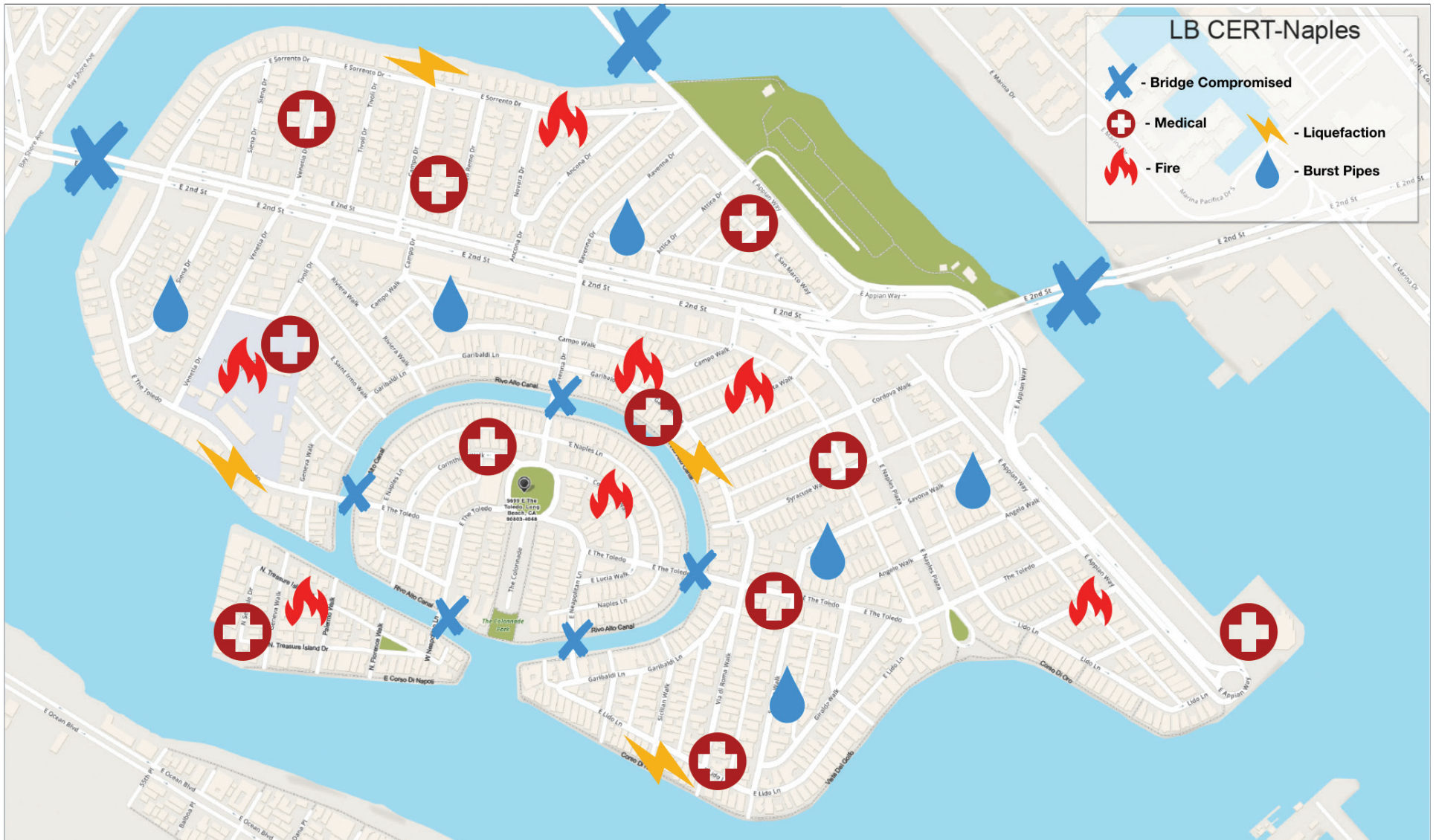
CERT graduates: Frank Neumann (Campo Walk) and Allan Rahn (The Toledo)

The LB CERT-Naples Team is using a series of dots on a large map to track where we have committed supporters. Do you mind if we add a dot to represent your support of The Plan? No personal information or actual address will be listed.

- Yes, the team may place a dot on the CERT map at my property line to note my support of The Plan.
- The team may place a dot on the CERT map on my street, but not specifically within my property lines.
- No, I'd prefer you not note my support of The Plan on the map.

Internal Use: DB ____ 3'x5' ____ Digital Map ____
--

# DISASTER STRIKES!



## What to do AFTER a catastrophic event...

Following a major incident (such as an intense earthquake with extreme damage and injuries), always start by securing yourself and your family.

Once you, your family, your pets and your home are safe, place a sign that reads "O.K." in your front window. If you need help and are able, display a sign that reads "HELP." See the last page of this packet for signs.

After tending to family and home, gradually expand your focus:

- Check on your immediate neighbors.
- Report to your designated Block meet-up location to team up with and help others.

# THE PLAN - OVERVIEW



More than 4,000 residents, employees, students, and visitors could be on Naples Island when a disaster strikes. That number could easily balloon to over 6,000 during special events such as the Boat Parade and Halloween.

## Envision This Scenario...

It's 3:00AM, the middle of a moonless night. A 7.3 earthquake (stronger than the quake of 1933) strikes the coast. Long Beach and Orange County are hit hard. The Long Beach Fire Department is responding to hundreds, if not thousands, of emergencies across the city. It will be days before they make it to Naples. Your loved ones are off the island. Cellular and data are out. No phones. No texts. Power is out - it's pitch black. Water pipes have burst. Gas pipes have ruptured and fires are breaking out. Two of the bridges onto the island have collapsed and the third is seriously compromised. There is no island access by automobile. It's high tide, not even a Duffy can navigate the canals. Many docks have been destroyed or detached from their wall structures. Dangerous debris and rubble are floating, or hidden just below the water's surface.

*Liquefaction* has caused portions of sidewalks and structures to sink several feet. Downed trees, wires and structures litter the roadways. Your neighbor's frightened dogs are wandering the street having slipped through broken windows. Several of your neighbors are seriously injured. This is a common refrain across the island.

***The first hours following an earthquake are the most crucial. Having a community-based plan of neighbors fending for neighbors in structured teams can save lives and ensure everyone safely navigates the catastrophe.***

***"Naples' emergency response plan is the new gold standard across the city!" — Suzie Price, 3rd District Councilwoman***

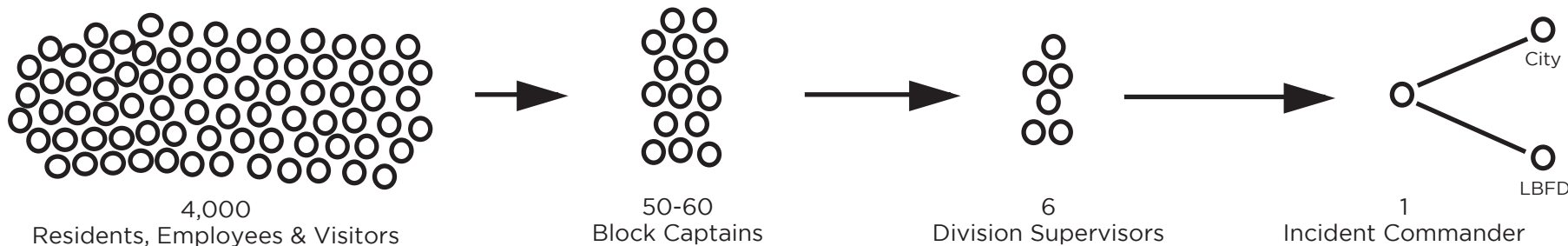
**The Plan relies upon CERT-trained volunteers and their neighbors working together**, with constant communication and the greatest adherence to personal safety, to address manageable issues before they become major crises.

The Plan incorporates FEMA's proven "Incident Command Structure" to organize volunteers and deploy teams. The Plan also follows structured communication and documentation protocols employed by professional emergency responders.

## The Plan...

The NIA has tailored an "Incident Command Structure" that will link all islanders, canvas every corner of the island, streamline communications, prioritize tasks and allocate resources:

- Individuals (residents, employees, visitors) report to designated Block Captains,
- Block Captains (50-60) report to Division Supervisors,
- Division Supervisors (6) report to the Island's Incident Commander,
- The Island's Incident Commander works directly with LBFD, the City, and others.





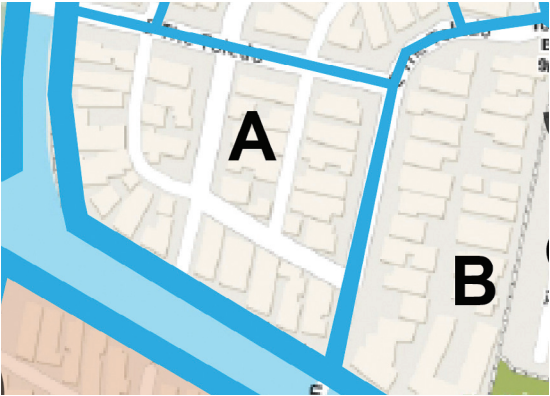
# THE PLAN - BREAKING IT DOWN

**AT THE BLOCK LEVEL**

The Plan divides Naples into approximately 50 “Blocks.” Each Block contains roughly 30-40 households and has a dedicated volunteer Block Captain. Prior to a disaster, Block Captains help their neighbors become as prepared as possible to navigate whatever happens. Following a disaster, Block Captains will help residents form teams to conduct light search and rescue, extinguish small fires, tend to the wounded, and secure the immediate area as needed.

Also at the Block level, volunteers may be needed to care for children, pets, elderly and those with special needs.

*“If we face a quake along the lines of Long Beach’s quake of ‘33, we could be in for a world of hurt.”*  
**—Michael O’Toole**  
**NIA President**



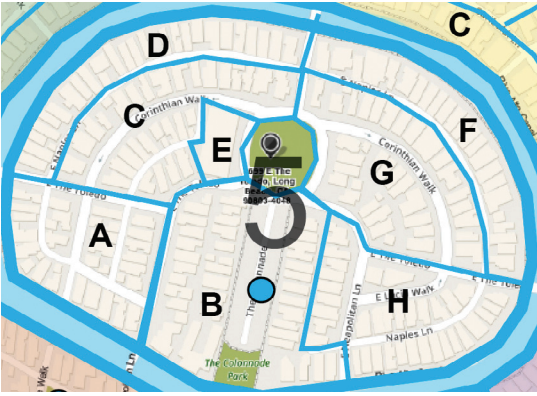
Block Level

**AT THE DIVISION LEVEL**

Blocks are clustered into areas called “Divisions.” The Island has 6 Divisions. Once a Block is secured, volunteers from that Block will report to their designated Division’s Staging Area. For example, the Staging Area for Division 5 is the Colonnade. *See the map on Pg 8 for more details.*

Volunteers will then check in and be assigned to teams. The teams will be deployed to locations in need of additional assistance. Some teams may take on specialized roles such as assisting visitors.

Any professionally trained emergency responders (such as retired firefighters, doctors, nurses, police officers and military personnel) who live on the Island, will have been encouraged in advance to help by heading to their respective Division Staging Areas. First aid and medical care will be provided in designated areas in each Division or in a centralized location on the island.



Division Level

**AT THE ISLAND LEVEL**

Naples Emergency Response Plan includes assistance for non-islanders who happen to be in the area at the time of the disaster. These might be visitors at Mother’s Beach, customers at any of the area businesses, or even drivers passing through on 2nd Street or Appian Way. A dedicated outreach team will work with these individuals to tend to the injured and provide food and temporary shelter.

Also at the island level, volunteers will organize a ferry service to shuttle individuals on and off the island from designated launch points.

*“CERT volunteers and their neighbors are a vital link in the chain of community preparedness and response.”*  
**—Jake Heflin**  
**Dir. LBFD’s CERT Program**



Island Level

# CERT Starts with Community



## *I'm not CERT trained and have limited mobility. How can I support Naples Emergency Response Plan?*

There's a role in the Emergency Response Plan for every person on Naples Island. And, fortunately, you don't have to drag victims from a crumbled house or rush into a burning building wielding a 15-pound axe to be on the team! In fact, you just commit to learn about The Plan, and gradually work to make your house and family "emergency ready."

### **First, register your household in our Naples Emergency Response Database. See page 3.**

This not only lets us know you are aware there is a plan, it also helps us connect the island and manage any scenario that comes our way.

**Second,** meet your Block Captain to learn about (or help develop) your Block's plan. Visit [NaplesIsland.org/CERT](http://NaplesIsland.org/CERT) for a roster of Captains. You'll discuss topics such as:

- how each person will check in to let others know their status ("I'm okay" or "I need help!");
- who has special needs that would become a factor if electricity were out for days or if evacuation were ordered; and
- who has special skills or emergency equipment that could be of use following a disaster.

**Third,** if, AND ONLY IF, you want to take it a bit further, you can consider answering

a "call-to-action" following a disaster. Volunteers on your block will take on a variety of roles such as:

- going from house to house to check for gas leaks and shutting off gas valves, if need be,
- helping care for pets that have escaped through broken windows or are temporarily abandoned because their owners are trapped off-island,
- providing emotional care for neighbors who have experienced great loss or are uncertain about loved ones off island,
- organizing food and water for volunteers who are canvassing your street.

There truly are roles for everyone! It's all about community... **neighbors fending for neighbors** until professional responders arrive.

***EARTHQUAKE! DROP • COVER • HOLD***  
***Stay away from windows. If you're in bed, stay there and protect your head with a pillow. If you're outdoors, find a clear spot away from buildings, trees, and power lines. Drop to the ground. If you're in a car, slow down and drive to a clear place.***

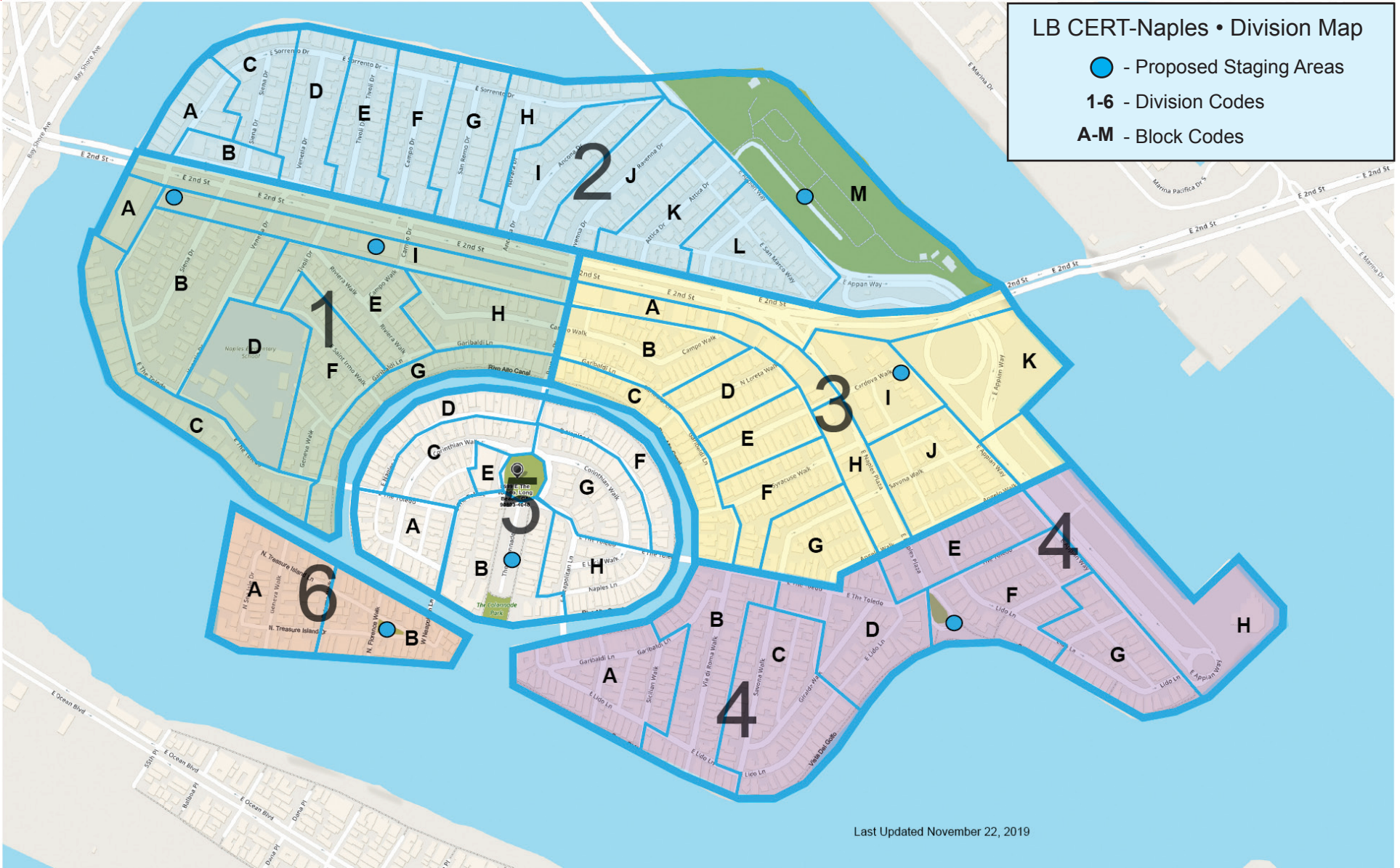
***—American Red Cross***



*Donna Kraus (Rivo Alto) explains Pet Care procedures to Island residents during a Campo Walk emergency response drill*



# KNOW YOUR DIVISION AND YOUR BLOCK



For emergency response purposes, Naples has been divided into 6 Divisions and subdivided into approximately 50 Blocks. Each Block contains 30-40 households, and will have at least one dedicated Block Captain. Our goal is to have two to three Block Captains per Block to serve as backups to one another since we don't know who will actually be on the Island when disaster strikes. **Visit [NaplesIsland.org/CERT](http://NaplesIsland.org/CERT) for more details.**



# KNOW YOUR BLOCK CAPTAIN



At the heart of Naples Emergency Response Plan is an island-wide network of “Block Captains.” Some have been CERT trained, but it is not a requirement of the role. Block Captains provide the crucial communications link between the Incident Command Center and all community members.

## BEFORE an Incident: Preparedness

Prior to a disaster, Block Captains help their neighbors become prepared by sharing information and facilitating connections:

- Liaison to LB CERT-Naples Committee
- Learn the island’s Emergency Plan
- Share the island’s Emergency Plan
- Community outreach
- Create a block Directory
- Connect neighbors
- Gather details about your Block
- Locate gas and water shutoff valves
- Inventory block’s skills and supplies
- Champion emergency preparedness, emergency kits, tools and supplies
- Help create reunification plans
- Practice hand radio communications
- Optional training in areas such as:  
CERT • CPR • HAM Radio Operation

## AFTER an Incident: Response

Following a major incident, Block Captains will work with Division Supervisors to help all residents navigate the crisis until professional responders arrive on the scene:

- Communications link between block residents and the Division Supervisor
- Secure your Block
- Organize teams:
  - Fire Suppression
  - Search and Rescue
  - Medical Triage
  - Pet Care
  - Child Care
  - Senior Care
  - Emotional Care
  - Assist Visitors

*Find your Block Captain  
with our up-to-the-minute  
BLOCK CAPTAIN DIRECTORY  
available online at  
[NaplesIsland.org/CERT](http://NaplesIsland.org/CERT)*



LB CERT graduates: Donna Fleming (Sorrento) and Rainer Rahaeuser (Ancona) during an emergency drill

## Community Supporters of Naples’ Emergency Response Plan include:



**FIFTH CHURCH OF  
CHRIST, SCIENTIST**



Gloria Dei Lutheran Church  
the little church with a big heart!





# BEFORE A DISASTER... CHECKLIST

## What to do BEFORE a catastrophic event

- Know your Block's identification code. See *Division/Block map on page 8*.
- Know your Block Captain and Naples Emergency Response Plan. For a list of Captains, visit [NaplesIsland.org/CERT](http://NaplesIsland.org/CERT)
- Participate in your "Block Meet-Up." Learn who has special needs, emergency supplies, and how each person can lend their unique skills following an incident.
- Identify three "Emergency Response Buddies" to check on you, your family, your pets and your property. Commit to being someone else's emergency response buddy.
- Stock up on water—1 gallon per person per day, and food items... enough for every person and pet in your household for 3-7 days.
- Have an emergency kit with medical supplies, and a week's worth of any medications.
- Have supplies and tools strategically located: fire extinguishers, crow bar, shoes, flashlights, spare batteries, escape ladder, crank or solar radio.
- Have a family reunification plan, including a distant contact in case local communications are overwhelmed.
- Have an island-evacuation plan that does not rely upon a car.

***Would you like to be a Block Captain or serve on Naples' Island-wide Emergency Response Implementation Committee? Let us know. Return the Show of Support form on page 3 or register online at [NaplesIsland.org/CERT](http://NaplesIsland.org/CERT)***

## FEMA's 12 Ways to Prepare

- Sign up for Alerts and Warnings
- Make a Plan
- Save for a Rainy Day
- Practice Emergency Drills
- Test Family Communication Plan
- Safeguard Documents
- Plan with Neighbors
- Make Your Home Safer
- Know Evacuation Routes
- Assemble or Update Supplies
- Get Involved in your Community
- Document and Insure Property

**Register with Alert Long Beach at**  
[www.longbeach.gov/disasterpreparedness/alert-long-beach](http://www.longbeach.gov/disasterpreparedness/alert-long-beach)

In the event of an emergency, severe weather, or any incident that impacts city operations, a text message and/or voice message will be sent to your cell number and or email address.

## Additional Earthquake and Tsunami Apps

- ShakeAlertLA
- QuakeFee Earthquake Alerts
- Earthquake: American Red Cross



SpencerSnyderGroup.com | (562) 355-0334

The Spencer Snyder Group is proud to support the LB CERT Naples Island Team

DRE #01912506



*CERT graduate Clarissa Bauer (9 Round 30 Min Kickbox Fitness) practicing medical triage*

# BEFORE A DISASTER... CHECKLIST



## Evacuation Kit—"To Go Bag" (TsunamiZone.org)

- Water
- Snacks
- Flashlight
- Portable Radio
- Emergency Blanket
- Cash (small denominations)
- ID Copy
- Insurance Information
- Emergency Contacts
- Prescription Meds
- Contacts/Glasses
- First Aid Kit
- Charging Cables
- Battery Pack
- Shirt
- Pants
- Underwear
- Socks
- Shoes
- Jacket
- Toothpaste
- Toothbrush
- Soap
- Pens
- Chalk
- Toilet Tissue
- Facial Tissue
- Games/Toys
- Diapers/Formula

### Additional Personal Items

- \_\_\_\_\_
- \_\_\_\_\_
- \_\_\_\_\_
- \_\_\_\_\_
- \_\_\_\_\_

## Your Pet's Emergency Supply Kit

- Food in a waterproof container
- Water
- Feeding Bowls
- Medicine and Medical Records
- First Aid Kit
- Collar with ID Tag and Leash
- Crate or Pet Carrier
- Sanitation - bags, litter box
- Photo of you and your pet together
- Familiar Items - Toys, Treats, Bedding
- Have Pet Care Buddies in case you're incapacitated or cannot get home

*Visit [NaplesIsland.org/CERT](http://NaplesIsland.org/CERT) for more details on...*

- *The Plan*
- *Block Captain Directory*
- *How to Show Your Support*
- *Emergency Preparedness Tips/Lists*
- *Important Links*
- *Implementation Committee*
- *Leadership Team*
- *Partners and Sponsors*



*John Angelo (Campo Walk), LB CERT-Naples Coordinator, joins residents of Novara, Ancona and Sorrento for a "Block MeetUp" to discuss Naples' Emergency Response Plan.*



  
**COUNCILWOMAN**  
**SUZIE PRICE**  
 Community | Creativity | Collaboration

COUNCILWOMAN  
SUZIE PRICE

## SUPPORTS NAPLES ISLAND

and the community-based  
Emergency Response Plan.  
Thank you for your service,  
unparalleled community  
collaboration, and  
emergency preparedness.

# EMERGENCY PREPAREDNESS SPONSORS

- As of Nov. 2019 -

## CHAMPION LEVEL

# Naples Improvement Association



COUNCILWOMAN

# SUZIE PRICE

Community | Creativity | Collaboration

## SEARCH + RESCUE LEVEL

THE **ORIANA SHEA** GROUP  
DRE# 01217538

markvidor **dds**  
TLC for teeth

SPENCER SNYDER GROUP  
DRE #01912206

## TEAM BUILDING LEVEL



# LONG BEACH YACHT CLUB

Realtors  
**Equity**  
BROKERS INC.

## TAKE ACTION LEVEL

**k.c. Branaghans**  
Irish Pub & Restaurant

基本 KIHON  
**9ROUND**  
30 MIN KICKBOX FITNESS

Sennikoff  
ARCHITECTS

**NIBA**  
NAPLES ISLAND BUSINESS ASSOCIATION

LISA A. HOPKINS  
OPTOMETRY

Daniel Iketani/crisisproducts.com • Elite Tax & Accounting Service, Inc.  
John Angelo • Nancy Eisner • Linda and Allan Rahn

## SAFETY FIRST LEVEL

Anchor Seaport Escrow • Artzón Enterprises, LLC (Cover Art)  
Chicago Title • Tina Everson

## PREPAREDNESS COUNTS LEVEL

AXIS Classical Pilates Studio • Betty Brite Cleaners  
Caught In the Moment Photography • Polly's Gourmet Coffee

THE **ORIANA SHEA** GROUP  
562-270-1775  
DRE #01217538



*Proudly supports Naples Island and its Community-based Emergency Response Plan*



*LB CERT graduates: Donna Fleming and Theresa Robie (Sorrento)*

5580 E 2nd St #206  
562.438.8802

markvidor **dds**  
TLC for teeth

*Mark Vidor, DDS is a proud supporter of Naples' Emergency Response Plan*

# BEFORE A DISASTER... WORKSHEET



*Create a paper copy of the contact information for your family and other important people/offices, such as medical facilities, doctors, schools, or service providers. Make sure everyone carries a copy in their backpack, purse, or wallet. If you complete your Family Emergency Communication Plan online at [ready.gov/make-a-plan](http://ready.gov/make-a-plan), you can print it onto a wallet-sized card. If you are using a mobile phone, a text message may get through when a phone call will not. This is because a text message requires far less bandwidth than a phone call.*

My Division\* \_\_\_\_\_ My Block\* \_\_\_\_\_ \*See map on Pg 8

Emergency Meeting Places

Outside of House \_\_\_\_\_

On our Block \_\_\_\_\_

Off Island \_\_\_\_\_

Out of Town \_\_\_\_\_

My Block Captain \_\_\_\_\_ Text # \_\_\_\_\_

Address \_\_\_\_\_

Email \_\_\_\_\_

Out-of-Town Contact \_\_\_\_\_ Text # \_\_\_\_\_

Email \_\_\_\_\_

Name \_\_\_\_\_ Text # \_\_\_\_\_

Address \_\_\_\_\_

Email \_\_\_\_\_

Name \_\_\_\_\_ Text # \_\_\_\_\_

Address \_\_\_\_\_

Email \_\_\_\_\_

Name \_\_\_\_\_ Text # \_\_\_\_\_

Address \_\_\_\_\_

Email \_\_\_\_\_

Name \_\_\_\_\_ Text # \_\_\_\_\_

Address \_\_\_\_\_

Email \_\_\_\_\_

## Important Numbers or Information (FEMA)

Police \_\_\_\_\_

Fire \_\_\_\_\_

Poison Control \_\_\_\_\_

Doctor \_\_\_\_\_

Doctor \_\_\_\_\_

Pediatrician \_\_\_\_\_

Dentist \_\_\_\_\_

Hospital/Clinic \_\_\_\_\_

Pharmacy \_\_\_\_\_

Medical Insurance \_\_\_\_\_

Policy # \_\_\_\_\_

Medical Insurance \_\_\_\_\_

Policy # \_\_\_\_\_

Homeowner/Rental Insurance # \_\_\_\_\_

Policy # \_\_\_\_\_

Flood Insurance # \_\_\_\_\_

Policy # \_\_\_\_\_

Veterinarian \_\_\_\_\_

Kennel \_\_\_\_\_

Electric Company \_\_\_\_\_

Gas Company \_\_\_\_\_

Water Company \_\_\_\_\_

Alternate/Accessible Transportation # \_\_\_\_\_

School \_\_\_\_\_

School \_\_\_\_\_

Other # \_\_\_\_\_

Other # \_\_\_\_\_

Other # \_\_\_\_\_



# EMERGENCY PREPAREDNESS RESOURCES



**Naples  
Improvement  
Association**

**Ready**  
Prepare. Plan. Stay Informed.

CITY OF  
**LONG BEACH**



**American  
Red Cross**



**FEMA**

## LB CERT-Naples Team

LBCERT.Naples@gmail.com  
NaplesIsland.org/CERT

## Naples Improvement Association

NaplesIsland.org  
P.O. Box 3687 • Long Beach, CA 90803

## Long Beach CERT

CERT@longbeach.gov  
LongBeach.gov/fire/  
community-outreach/CERT  
562.570.2525

## Ready.Gov/CERT

National-level CERT overview

## City of Long Beach

**Dept of Disaster Preparedness**  
LongBeach.gov/disasterpreparedness

## Red Cross

CPR classes in Long Beach  
RedCross.org/local/california/take-a-class

## FEMA

Checklists & Toolkits  
FEMA.gov/preparedness-checklists-toolkits

## LA County Emergency

County-level tips, contacts, checklists  
LACounty.gov/emergency

## Earthquake Country Alliance

Seven steps to earthquake safety  
earthquakecountry.org

## WireCutter

Emergency Preparedness Product Reviews  
thewirecutter.com/reviews/emergency-preparedness

## Southern California Earthquake Center

Earthquake studies and tracking  
scec.org

## Ready Long Beach

Emergency Preparedness Expo  
readylongbeach.org

## Governor's Office of Emergency Services

California based planning and preparedness  
caloes.ca.gov/individuals-families

## United States Geological Survey

Earthquake studies and monitoring  
earthquake.usgs.gov



*Rich Ferdon and Dana Bell (Block Captains for Campo Walk) demonstrate fire suppression techniques at Naples first neighborhood emergency response drill, November 2019.*



After a disaster, if you and your family are “OK”, place this card in your front window or securely tape it to a door facing the street. CERT volunteers will first check houses with no cards or “HELP” cards displayed. CERT volunteers will later check houses with “OK” cards to make sure neighbors are still OK.



We are OK and have evacuated. Contact us at:



Use tape or two bandaids to hang this OK/HELP card.

**BEFORE A DISASTER**, put two bandaids in this booklet and put the booklet under your bed, along with sturdy shoes, leather gloves, a flashlight with spare batteries, and a crowbar. **AFTER A DISASTER**, use the bandaids to hang this card on the front door or in a window so it is visible from the street.

# HELP

We have evacuated. Contact us at: